



NAVIGATION OF FIRESTOP SELECTOR ON HCP 2.0

LOG IN AND SETTINGS

- Visit the Firestop Selector using the QR code
- Or direct link : <https://firestop.hilti.com/>
- Select your country and language (a pop-up should appear)



- On your first visit, you will be asked to accept an End-user agreement (EUA) for your profile country
- When you first visit the HCP2 Dashboard, you may be asked to provide additional information to confirm your profile country (to then provide you the applicable EUA)



CREATE LOCALIZATION SETTINGS BY SELECTING YOUR TIMEZONE AND UNITS, ACCESS END-USER AGREEMENT (EUA)

SETTINGS

Account

Legal & Policies

Account settings

BF Barb French
skencou@hilti.com

PROFILE COUNTRY
United Kingdom

COUNTRY *
United States

LANGUAGE *
English

TIMEZONE *
Local

Unit *
m, kg, n

Currency *
CHF

CANCEL SAVE CHANGES

SETTINGS

Account

Legal & Policies

Legal & Policies

End-user agreement

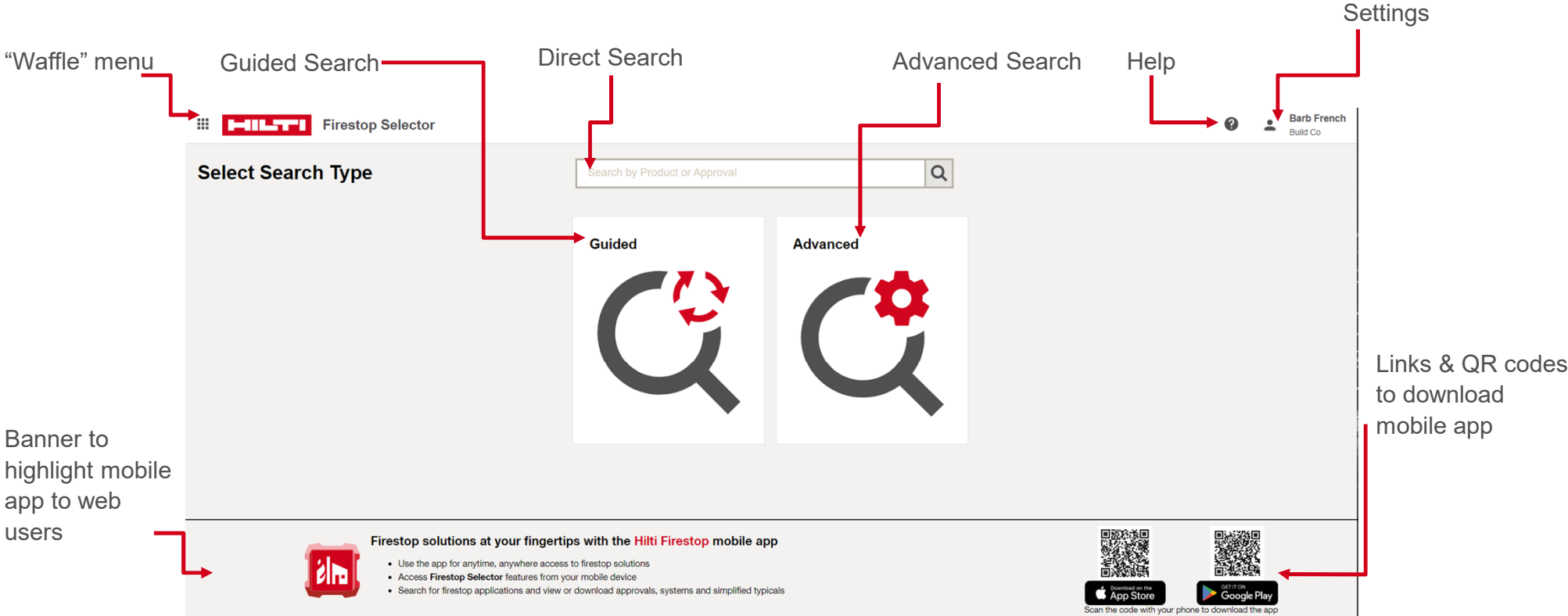
Privacy policy

Cookie settings

Revoke EUA Download EUA

CANCEL SAVE CHANGES

FIRESTOP SELECTOR HOMEPAGE NAVIGATION



NAVIGATING SEARCH RESULTS

The image displays two screenshots of the Firestop Selector web application. The top screenshot shows the 'Search Summary' page with various filters and a search bar. The bottom screenshot shows the search results in a grid view, with annotations for each product card.

Annotations and Features:

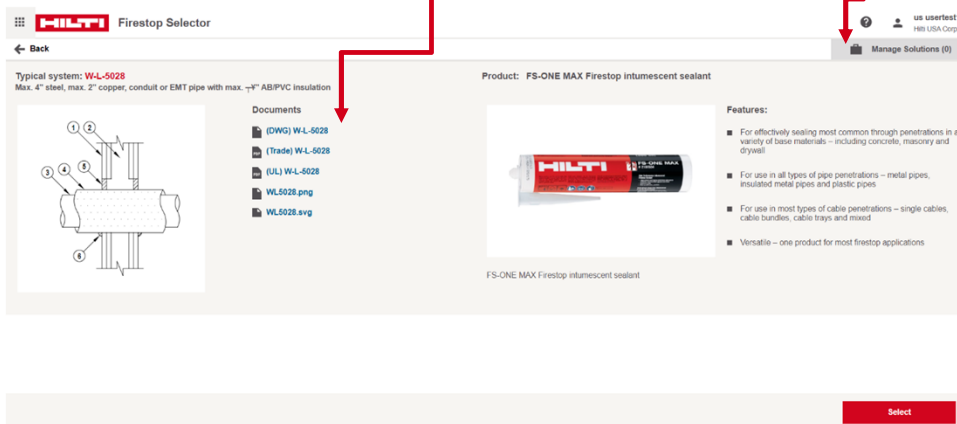
- Grid & list views:** Points to the view toggle icons (grid and list) in the top left of the search results.
- Reset filters:** Points to the 'Reset filters' button in the top right of the search results.
- Additional filters:** Points to the 'More Filters' button in the top right of the search results.
- Select "Manage Solutions" to save selected solutions to a project:** Points to the 'Manage Solutions (0)' button in the top right of the search results.
- Use filters to conduct advanced search:** Points to the 'Filter solutions' section in the top left of the search results.
- Sort results:** Points to the 'Sort results' button in the top left of the search results.
- Select preferred product:** Points to the 'FS-ONE MAX' product card in the search results.
- Select solution:** Points to the 'W-L-5028' product card in the search results.
- Download files:** Points to the 'System UL' and 'System DWG' links in the product card.
- Select "Preview" for more information:** Points to the 'Preview' button in the product card.



NAVIGATING “PREVIEW” PAGE & “MANAGE SOLUTIONS” POP-UP

Select “Manage Solutions”
to save selected solutions
to a project

Download files



Select solution

MANAGE SOLUTIONS

Selected items:

Clear all



W-L-5028

- 1 Hour or 2 Hour
 - Max. 4" steel, max. 2" copper, conduit or EMT pipe with max. $\frac{3}{4}$ " AB/PVC insulation
- ✓ System UL ✓ System DWG ✓ System Trade



Log in to access full capabilities:

- ✓ Create and manage projects
- ✓ Store solutions in the cloud
- ✓ Companion mobile applications
- ✓ Submittal Generator

Log in / Register

Save solution
to projects or
drafts

Log in or register to
proceed



ACCESS SAVED FIRESTOP SOLUTIONS BY LOGGING IN OR REGISTERING

The screenshot shows the Hilti website's login and registration interface. The Hilti logo is in the top left, and a 'CONTACT' link is in the top right. The main content area is divided into two panels: 'Log in' on the left and 'Register' on the right. Red arrows point from text annotations to the respective panels. The 'Log in' panel has fields for 'E-mail address' and 'Password', both marked as 'Required'. Below these is a red 'LOG IN' button and a 'Forgot password?' link. The 'Register' panel lists benefits of creating an account and includes a 'GET STARTED NOW' button. A footer banner with a headset icon provides contact information for registration issues.

Log In Using Existing HCP Email & Password

If New, Complete Registration

Log in

E-mail address

Required.

Password

Required.

LOG IN


[Forgot password?](#)

Register

Create an account to gain 24/7 access to:

- Unlock exclusive discounts and pricing
- Shop Hilti's latest innovations
- Create orders and quotes
- Process repairs and get detailed tracking updates
- Access invoices and make payments

GET STARTED NOW

 For any registration issues, please contact Hilti Customer Service at 1-800-879-8000 (US) or 1-800-363-4458 (CA)

OPTIONS TO GENERATE SUBMITTAL FROM SELECTOR

From “Manage Solutions” in FSS Search Results

MANAGE SOLUTIONS

Selected items: [Clear all](#)

WW-S-0074

- 1 Hour or 2 Hour
- Gypsum wall to concrete wall (wall-to-wall)
- ✓ System UL ✓ System DWG ✓ System Trade

[Add more](#) [Save](#) [Save & Generate Submittal](#)

Select “Save & Generate Submittal” to save selected solutions to a project

NAVIGATING SAVE & CREATING NEW PROJECTS (WITHIN THE FIRESTOP SELECTOR)

Input project name & Country

Expand to enter more project details (optional)

Create new project

Enter project details (optional)

PROJECT SELECTION

Project *

Mexico 1

+ New Project

CREATE A NEW PROJECT

Project name *

Project 8-5

Country *

United States

Portfolio *

US

More details

Cancel

Create

New Folder

Cancel

Save here

CREATE A NEW PROJECT

Project Info

Project name *

Project 8-5

Project address

Country *

United States

Portfolio *

US

Address line 1

placeholder

Address line 2

placeholder

Postal code

placeholder

City

placeholder

State / Region

placeholder

Contact information

Assign me

Contact Email

placeholder

Position

placeholder

Contact Phone Number

Country Code

placeholder

Phone Number

placeholder

Contact Company

placeholder

Contact Name

placeholder

Cancel


Create



Solution successfully saved to Project 8-5 project

Your solution is saved in Hilti Construction Platform for future reference and further actions

Go to Submittal

NAVIGATING SUBMITTAL GENERATOR

 Firestop Selector

 us usertest1
Hilti USA Corp

Submittal Generator

1 General

2 Documents

3 Cover Page

GENERAL INFORMATION

Project *

Hierarchy

Select a project from the list *

All

+ Add project

Select project from list

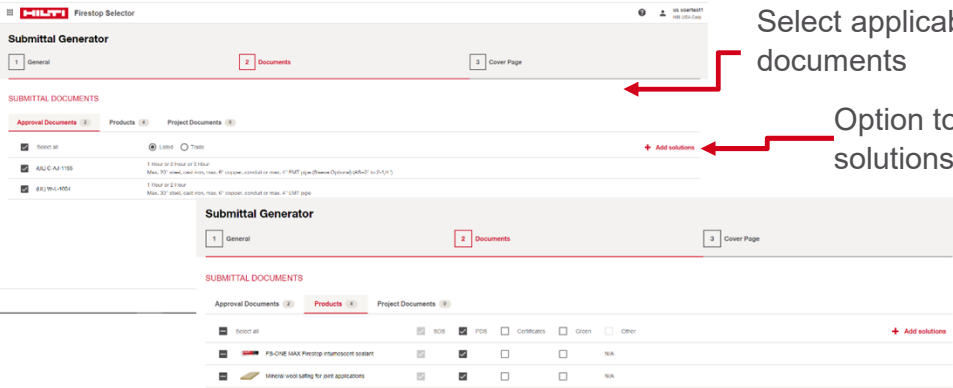
Select applicable folder/hierarchy

Option to add new project

Proceed to next step

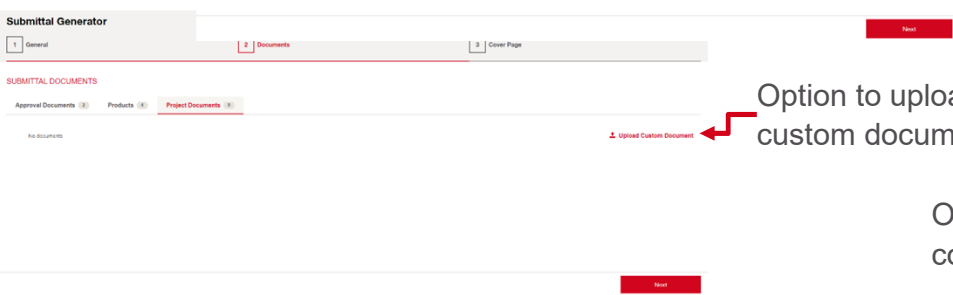
Next

NAVIGATING SUBMITTAL GENERATOR



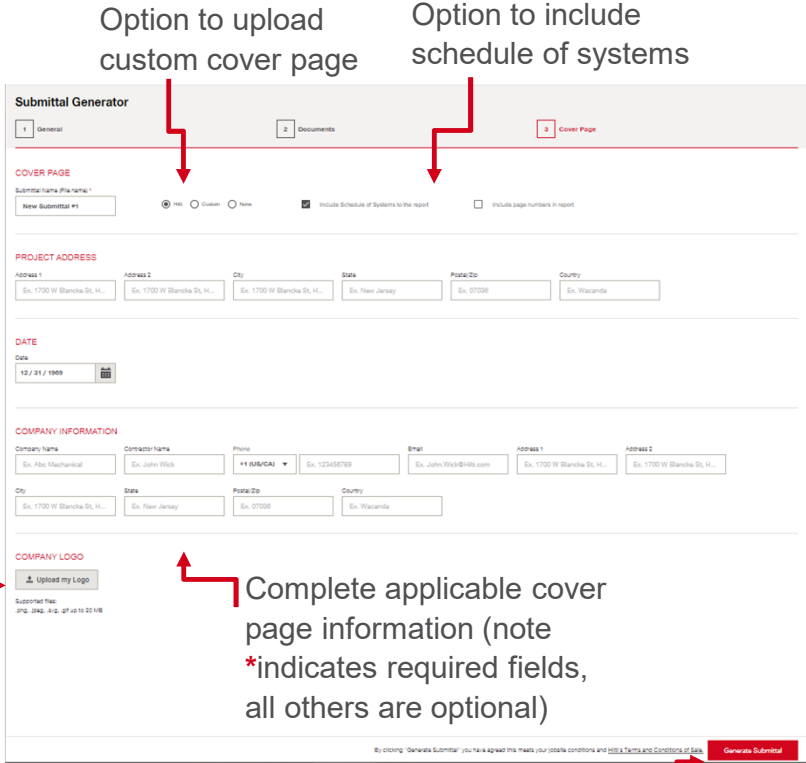
Select applicable documents

Option to add solutions



Option to upload custom document

Option to upload company logo



Option to upload custom cover page

Option to include schedule of systems

Generate Submittal

Complete applicable cover page information (note *indicates required fields, all others are optional)



ACCESSING SUBMITTAL FROM PROJECT DASHBOARD

Hilti Construction Platform

Home

Launchpad and recent

Projects

My Projects

Projects

My Construction Projects

Access "Submittal"

Search...

My projects

Updated by

+ New

< Share

| Name | Owner | Last updated | Updated by |
|---|-------|----------------|-------------|
| New Submittal #1.pdf | | | - |
| New Submittal #1 Schedule of Systems.xlsx | | Aug 3, 5:03 AM | Barb French |

ACCESS FIRESTOP SELECTOR FROM HCP DASHBOARD & PROJECTS

From HCP
“waffle” menu

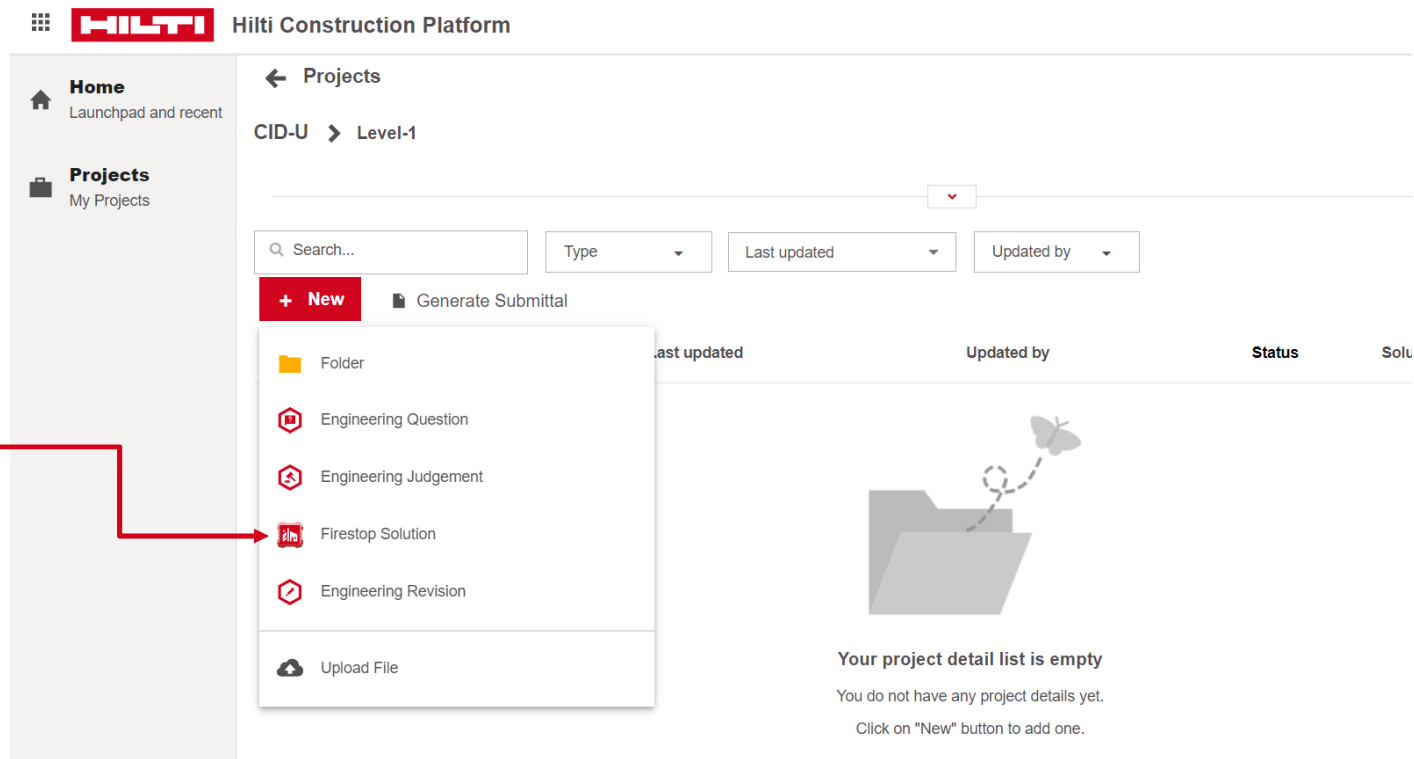
| Name | Type | Last updated | Updated by |
|-----------|-------------|---------------------|---------------|
| FW-D-1043 | UL Solution | Yesterday, 11:44 AM | us userstest1 |
| FW-D-1071 | UL Solution | Yesterday, 11:44 AM | us userstest1 |

From HCP
Dashboard

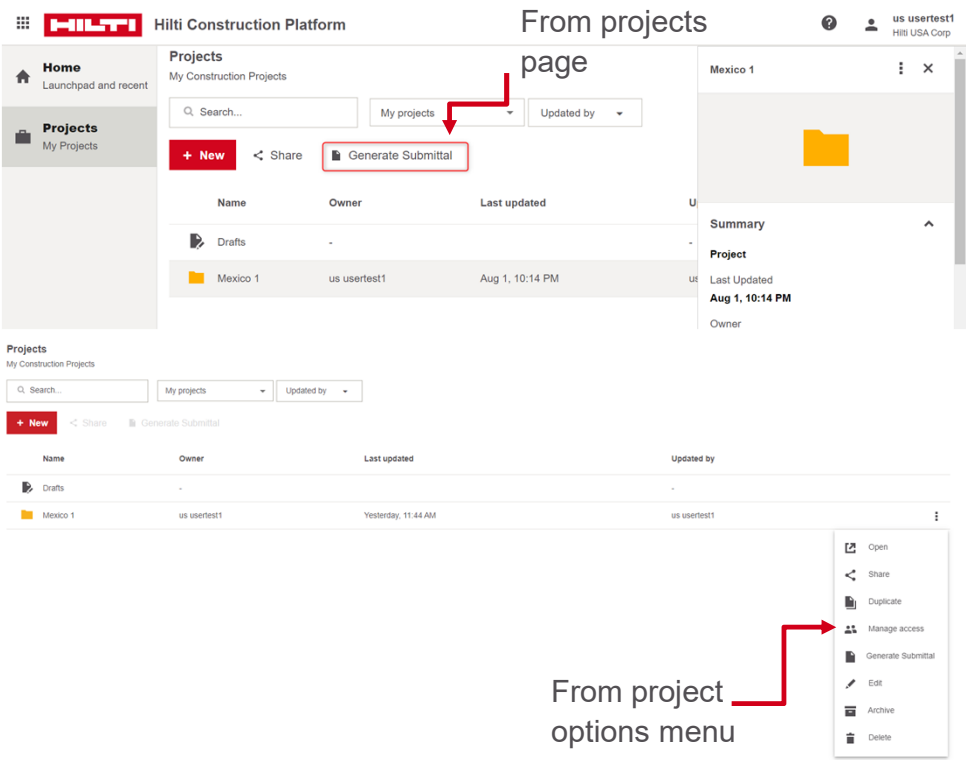
| Name | Type | Last updated | Updated by |
|---|--------------|----------------|------------|
| Copper Pipe in Flexible Wall - EI 90 (CU) | ETA Solution | Aug 3, 4:48 AM | |

ADDING SOLUTIONS DIRECTLY TO PROJECTS OR FOLDERS

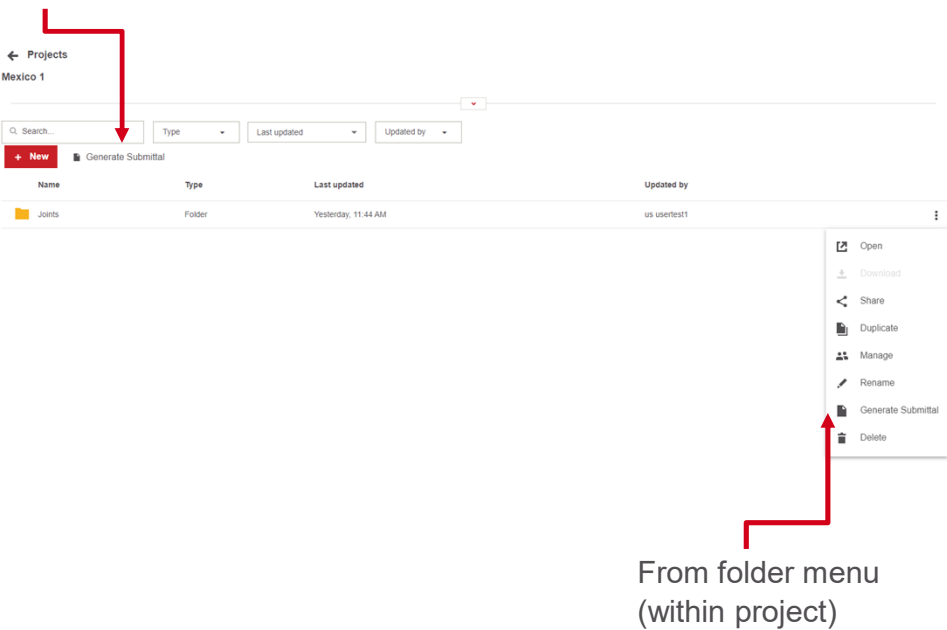
Add new Firestop Solutions directly to a project or folder (links to Firestop Selector)



OPTIONS TO GENERATE SUBMITTAL FROM HCP PROJECTS



From within project





FIRESTOP SELECTOR MOBILE APP FOR HCP 2.0

DOWNLOAD THE **NEW** FIRESTOP SELECTOR & EJ MOBILE APP FOR IOS OR ANDROID!



Hilti Firestop Selector Mobile – Android App:

<https://play.google.com/store/apps/details?id=com.hilti.mobile.firestopselector>

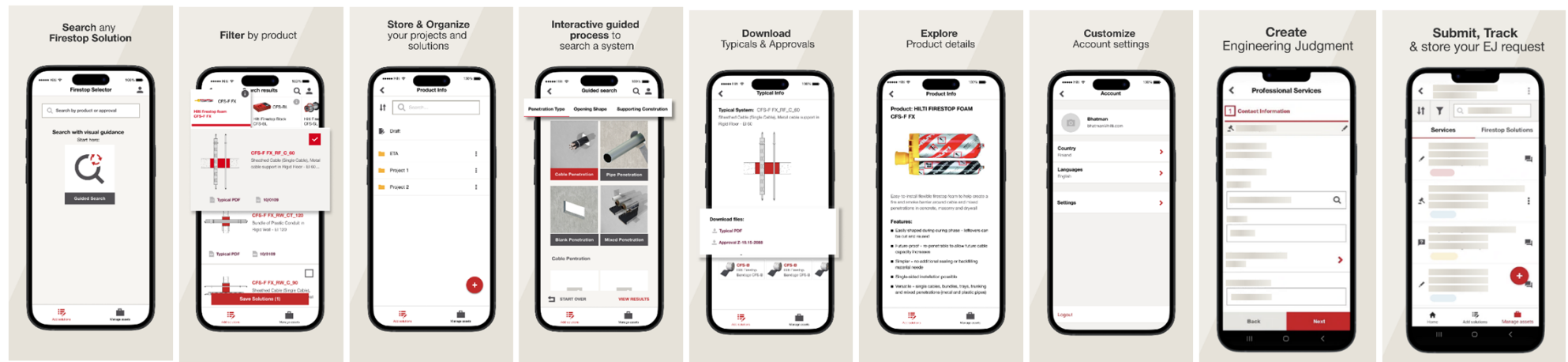


Hilti Firestop Selector Mobile – IOS App:

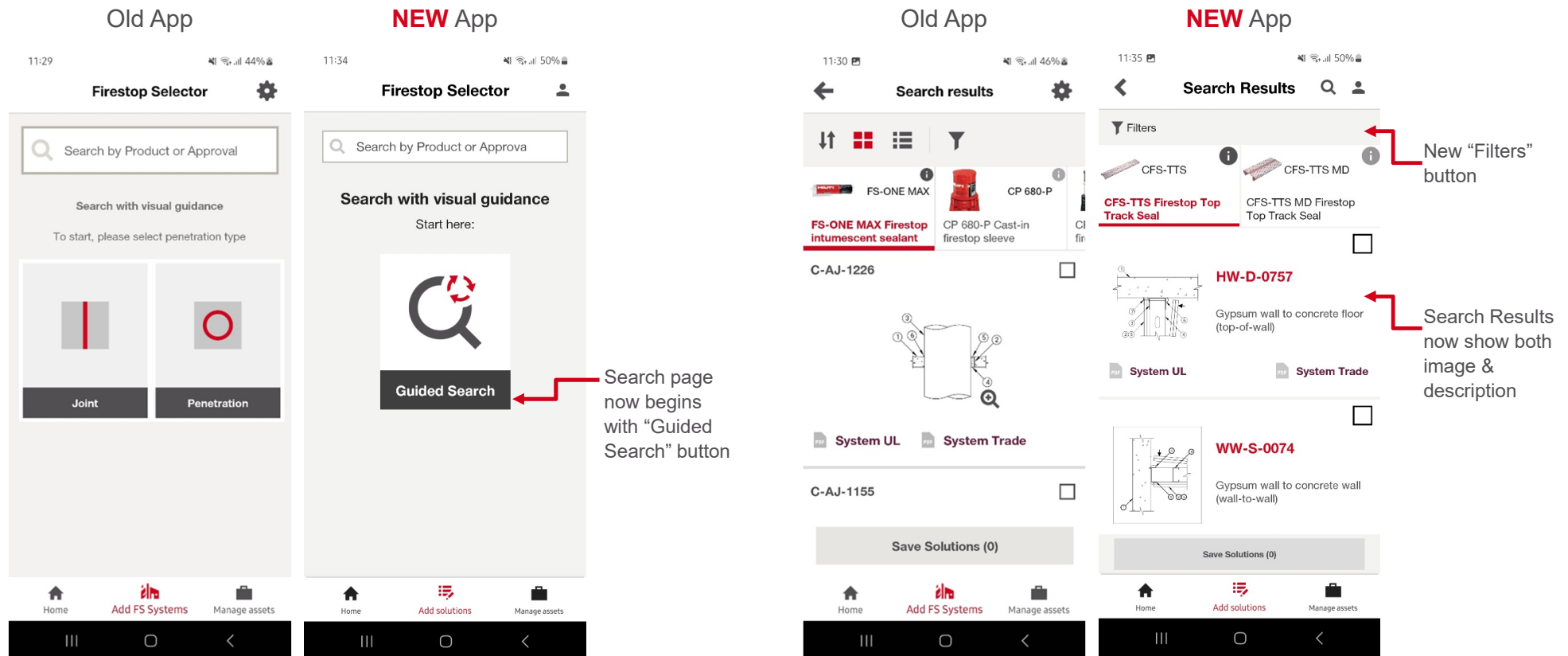
<https://apps.apple.com/us/app/hilti-firestop-selector/id1663231816>



HILTI FIRESTOP SELECTOR MOBILE APP FEATURE NAVIGATION

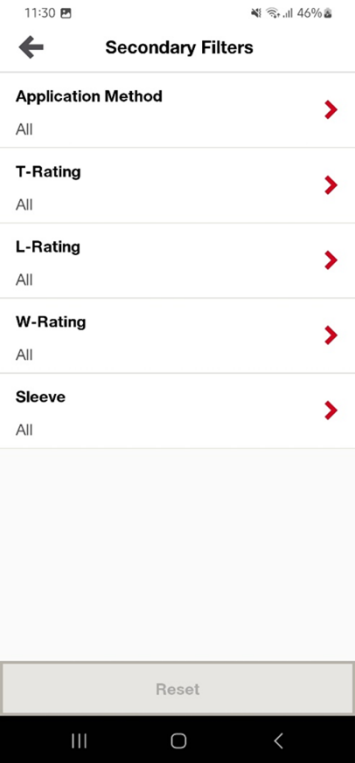


UPDATES TO SEARCH PAGE & RESULTS IN HCP 2.0 MOBILE APP

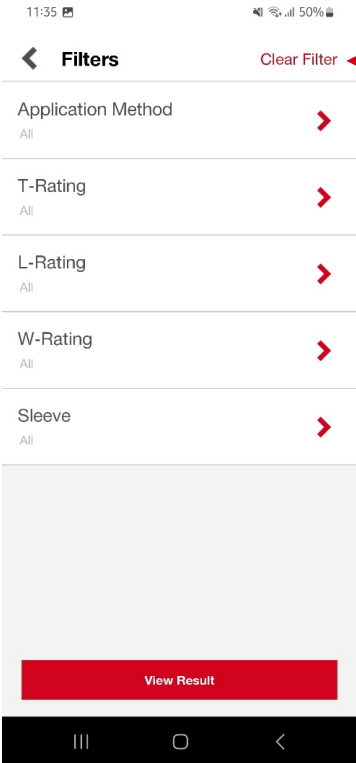


UPDATES TO SECONDARY FILTERS & PROJECTS IN HCP 2.0 MOBILE APP


Old App



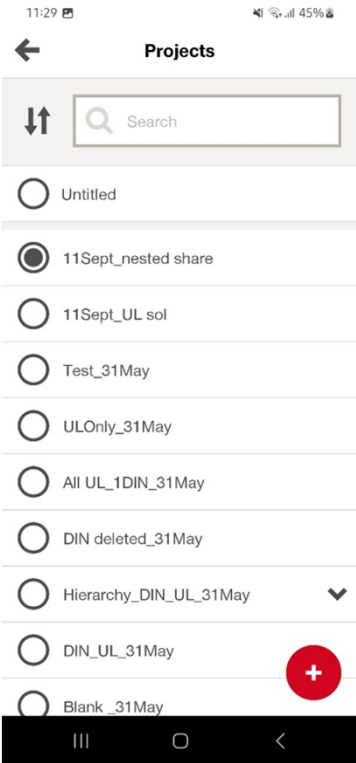
NEW App



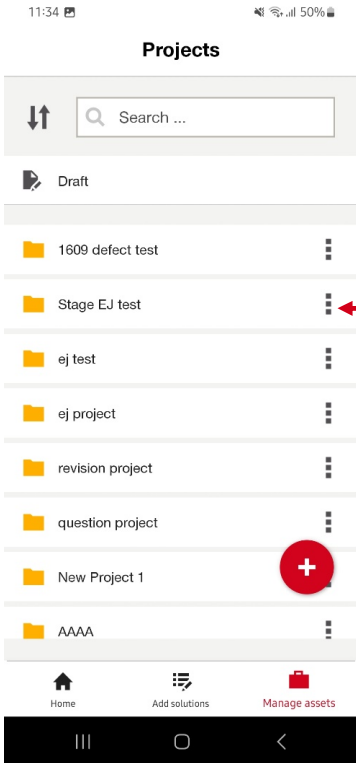
Updated user interface for secondary filters




Old App



NEW App



Deletion of Projects & Folders, creation of Folders within Projects





THANK YOU

